

INSTRUCTIONS TO AUTHORS

A. General

In upper right corner of title page **write by hand** "For CMP".

Manuscripts should be submitted in duplicate. They should preferably be written in English; papers in French or German are also accepted.

Manuscripts must be in their **final form**, typed on one side of each sheet only, with double spacing and wide margins. Formulae should be typewritten whenever possible. Mimeographed copies are not acceptable unless clearly legible.

Please include a "Note for the Printer" explaining markings used. See suggestion overleaf.

To speed up publication, authors will receive **only one set of proofs**: provisionally numbered page proofs. Authors are requested to **correct typographical errors only**; they will be charged for corrections involving changes, additions or deletions to the original manuscript.

Diagrams should be submitted on separate sheets, not included in the text. They should be drawn in Indian ink in clean uniform lines, the whole about twice the size of the finished illustration. Inscriptions should allow for the figure 1, for example, to be about 2 mm high in the final version (i.e. 4 mm for reduction $\times \frac{1}{2}$). The author should mark in the margin of the manuscript where diagrams may be inserted.

Footnotes, other than those which refer to the title heading, should be numbered consecutively and placed at the foot of the page to which they refer (not at the end of the article).

Please give on the first page of the manuscript a **running head** (condensed title), which should not exceed 70 letters including spaces.

References to the literature should be listed at the end of the manuscript. The following information should be provided for **journal articles**: names and initials of all authors, name of the journal, volume, first and last page numbers and year of publication. References to **books** should include name(s) of author(s), full title, edition, place of publication, publisher and year of publication.

Examples

Bombieri, E., Giusti, E.: *Inventiones math.* **15**, 24–46 (1971)

Tate, J.T.: *p*-Divisible groups. In: *Proceedings of a conference on local fields*, pp. 158–183. Berlin, Heidelberg, New York: Springer 1967

Authors of this journal can benefit from library and photocopy fees collected by VG WORT if certain conditions are met. If an author lives in the Federal Republic of Germany or in West Berlin, it is recommended that he contact Verwertungsgesellschaft WORT, Abteilung Wissenschaft, Goethestrasse 49, D-8000 München 2, for detailed information.

B. Marking

1. Text

The words “**Theorem**”, “**Lemma**”, “**Corollary**”, “**Proposition**” etc. are normally printed in **boldface**, followed by the formulation in italics (to be underlined in the manuscript).

The words “*Proof*”, “*Remark*”, “*Definition*”, “*Note*” etc. are printed in *italics* with the formulation in ordinary typeface.

Words or sentences to be set in italics should be marked by single underlining.

2. Formulae

Letters in formulae are normally printed in italics, figures in ordinary typeface.

It will help the printer if in doubtful cases the position of indices and exponents is marked thus: $b^{\hat{j}}$, $a^{\check{v}}$. Spacing of indices and exponents must be specially indicated (A_m^n) otherwise they will be set (A_m^n).

Underlining for special alphabets and typefaces should be done according to the following code:

single underlining:	small letter
double underlining:	capital letter
brown:	boldface headings, boldface letters in formulae
yellow:	upright (abbreviations e.g. Re, Im, log, sin, ord, id, lim, sup, etc.)
red:	Greek
blue:	Gothic
green:	Script
violet:	the numeral 1, and zero (to distinguish them from the small letter <i>l</i> and the capital letter <i>O</i>)

The following are frequently confused:

$\cup, u, \cup, U; \circ, o, O, 0; \times, x, X, \kappa; \vee, v, \nu; \theta, \Theta, \phi, \Phi, \emptyset; \psi, \Psi; \varepsilon, \epsilon;$

$a', a^1;$ the symbol a and the indefinite article a ;

also the handwritten Roman letters:

$c, C; e, l; I, J; k, K; o, O; p, P; s, S; u, U; v, V; w, W; x, X; z, Z;$

Please take care to distinguish them in some way.

C. Examples

1. Special alphabets or typefaces

Script	<i>A, B, C, D, E, F, G, H, I, J, K, L, M, N, O, P, Q, R, S, T, U, V, W, X, Y, Z</i> <i>a, b, c, d, e, f, g, h, i, j, k, l, m, n, o, p, q, r, s, t, u, v, w, x, y, z</i>
Sanserif	A, B, C, D, E, F, G, H, I, J, K, L, M, N, O, P, Q, R, S, T, U, V, W, X, Y, Z a, b, c, d, e, f, g, h, i, j, k, l, m, n, o, p, q, r, s, t, u, v, w, x, y, z
Gothic	A, B, C, D, E, F, G, H, I, J, K, L, M, N, O, P, Q, R, S, T, U, V, W, X, Y, Z a, b, c, d, e, f, g, h, i, j, k, l, m, n, o, p, q, r, s, t, u, v, w, x, y, z
Boldface	A, B, C, D, E, F, G, H, I, J, K, L, M, N, O, P, Q, R, S, T, U, V, W, X, Y, Z a, b, c, d, e, f, g, h, i, j, k, l, m, n, o, p, q, r, s, t, u, v, w, x, y, z
Special Roman	A, B, C, D, E, F, G, H, I, J, K, L, M, N, O, P, Q, R, S, T, U, V, W, X, Y, Z, 1
Greek	$\Gamma, \Delta, \Theta, \Lambda, \Xi, \Pi, \Sigma, \Phi, \Psi, \Omega$ $\alpha, \beta, \gamma, \delta, \varepsilon, \zeta, \eta, \theta, \vartheta, \iota, \kappa, \lambda, \mu, \nu, \xi, \omicron, \pi, \rho, \sigma, \tau, \upsilon, \varphi, \phi, \chi, \psi, \omega$

2. Notations

preferred form	instead of	preferred form	instead of
$A^*, \tilde{b}, \gamma', \nu$	$\bar{A}, \hat{b}, \check{\gamma}, \check{\nu}$	$f: A \rightarrow B$	$A \xrightarrow{f} B$
lim sup, lim inf	$\overline{\lim}, \underline{\lim}$		$\cos \frac{1}{x}$
inj lim, proj lim	$\overleftarrow{\lim}, \overrightarrow{\lim}$	$\frac{\cos(1/x)}{(a+b/x)^{1/2}}$	$\sqrt{a + \frac{b}{x}}$
$\exp(-(x^2+y^2)/a^2)$	$e^{-\frac{x^2+y^2}{a^2}}$		
f^{-1}	f^{-1}		

Acta Informatica
 Applied Mathematics and Optimization
 Applied Physics
 Archiv für Elektrotechnik
 Archive for History of Exact Sciences
 Archive for Rational Mechanics and Analysis
 Archives of Environmental Contamination and Toxicology
 Archives of Microbiology
 Astronomy and Astrophysics
 Bauingenieur
 Behavioral Ecology and Sociobiology
 Biological Cybernetics
 Biophysics of Structure and Mechanism
 Bulletin of Environmental Contamination and Toxicology
 Carlsberg Research Communications
 Chromosoma
 Communications in Mathematical Physics
 Contributions to Mineralogy and Petrology
 Current Genetics
 Current Microbiology
 Differentiation
 Environmental Geology
 Environmental Management
 European Journal of Applied Microbiology and Biotechnology
 European Journal of Biochemistry
 Fresenius' Zeitschrift für Analytische Chemie
 Holz als Roh- und Werkstoff
 Informatik-Spektrum
 Ingenieur-Archiv
 Inventiones mathematicae
 Irrigation Science
 Journal of Comparative Physiology A. Sensory, Neural, and Behavioral Physiology
 B. Biochemical, Systemic, and Environmental Physiology
 Journal of Geophysics/
 Zeitschrift für Geophysik
 Journal of Mathematical Biology
 The Journal of Membrane Biology
 Journal of Molecular Evolution
 Konstruktion im Maschinen-, Apparate- und Gerätebau
 manuscripta mathematica
 Marine Biology
 The Mathematical Intelligencer
 Mathematical Systems Theory
 Mathematische Annalen
 Mathematische Zeitschrift
 Metrologia
 Microbial Ecology
 Mineralium Deposita
 MGG Molecular & General Genetics
 Die Naturwissenschaften
 Numerische Mathematik
 Oecologia
 OR-Spektrum
 Operations Research-Spektrum
 Physics and Chemistry of Minerals
 Planta
 Polymer Bulletin
 Public International Law
 Radiation and Environmental Biophysics
 Roux's Archives
 of Developmental Biology
 Semigroup Forum
 Siemens Forschungs- und Entwicklungs-berichte/Research and Development Reports
 Theoretica Chimica Acta
 TAG Theoretical and Applied Genetics

Springer Journals keeping you in pace with science

Springer journals are known and respected internationally for keeping professionals in science and in medicine, in research and in industry well-informed about the rapid progress in their fields. Decide for yourself by sending in one of the order coupons.

To: **The Head Librarian/The Library Committee**

From: _____

Department: _____

- I/we have studied the Springer Journal(s)

- and recommend that the journal(s) be purchased for the Main/Department Library
- I/we would like to see the Springer Journals Catalog with information on subscriptions/back volumes/microform
- Please obtain sample copies on other related Springer Journals and/or latest index/sample copy including volume-index

SUBSCRIPTION ORDER FORM

SPRINGER-VERLAG BERLIN HEIDELBERG NEW YORK

Please order through your bookseller:
 or Springer-Verlag, P.O. Box 105 280, D-6900 Heidelberg,
 (All countries except North America)
 or (North America) Springer-Verlag New York Inc.,
 175 Fifth Avenue, New York, NY 10010, USA
 North America subscriptions are entered with prepayment only.

- Please enter my/our subscription to (please give title or ISSN)

Full subscription information is given on inside front or back cover page

Name: _____

Address: _____

Date/Signature: _____

- This is a new order
- This is a renewal order

Please send a sample copy and/or latest index/sample copy including volume-index (supply is limited):

Please send information concerning

- back volumes
- microform editions
- journals catalog

To: The Head Librarian/The Library Committee

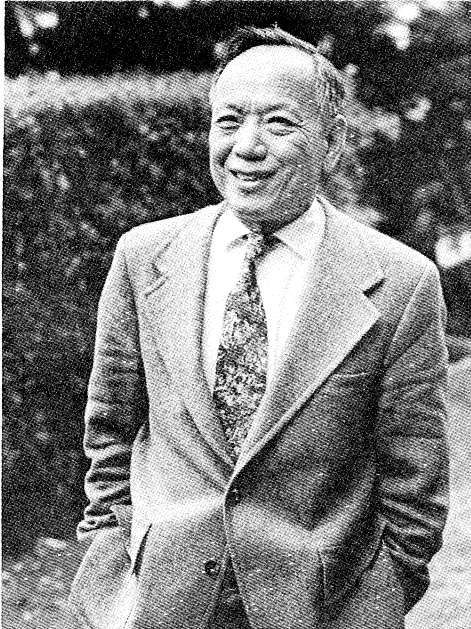
Postcard - Airmail

To the bookseller

Wärme- und Stoffübertragung/
Thermo- and Fluid Dynamics
Werkstattstechnik
wt - Zeitschrift für industrielle Fertigung
Wood Science and Technology
Zeitschrift für Lärmbekämpfung
Zeitschrift für Lebensmittel-Untersuchung
und -Forschung
Zeitschrift für Physik A
Atoms and Nuclei
Zeitschrift für Physik B
Condensed Matter
Zeitschrift für Physik C
Particles and Fields
Zeitschrift für Wahrscheinlichkeitstheorie
und verwandte Gebiete
Probability Theory and Stochastics
Zentralblatt für Mathematik und ihre
Grenzgebiete/Mathematics Abstracts
Zoomorphology



Springer-Verlag
Berlin
Heidelberg
New York



S.-s. Chern

Complex Manifolds Without Potential Theory

(With an appendix on the geometry of characteristic classes)

Universitext

2nd edition. 1979. V, 152 pages
DM 25.-; approx. US \$ 11.90
ISBN 3-540-90422-0

This is a short introduction to complex manifolds, including sheaf theory, vector bundles, connections, curvature forms, and characteristic classes.

The second edition contains a new appendix on the geometry of characteristic classes and a new treatment of the Chern-Simons invariants which is more adaptable to applications.

Applications of Chern's concepts include gauge theory and Yau's proof of the Calabi conjecture.

The Chern Symposium 1979

Proceedings of the International Symposium on Differential Geometry in honor of S.-s. Chern, held in Berkeley, California, June 1979

Editors: W.-Y. Hsiang, S. Kobayashi, I. M. Singer, A. Weinstein, J. Wolf, Hung-Hsi Wu

1980. VII, 259 pages
Cloth DM 56.-; approx. US \$ 26.70
ISBN 3-540-90537-5

Contents:

M. F. Atiyah: Real and Complex Geometry in Four Dimensions. – *R. Bott:* Equivariant Morse Theory and the Yang-Mills Equation on Riemann Surfaces. – *E. Calabi:* Isometric Families of Kähler Structures. – *M. Green, P. Griffiths:* Two Applications of Algebraic Geometry to Entire Holomorphic Mappings. – *F. Hirzebruch:* The Canonical Map for Certain Hilbert Modular Surfaces. – *N. H. Kuiper:* Tight Embeddings and Maps. Submanifolds of Geometrical Class Three in E^N . – *J. Moser:* Geometry of Quadrics and Spectral Theory. – *L. Nirenberg:* Remarks on Nonlinear Problems. – *R. Ossermann:* Minimal Surfaces, Gauss Maps, Total Curvature, Eigenvalue Estimates, and Stability. – *W.-T. Wu:* de Rham-Sullivan Measure of Spaces and Its Calculability. – *C. H. Yang:* Fibre Bundles and the Physics of the Magnetic Monopole. – *S.-T. Yau:* The Total Mass and the Topology of an Asymptotically Flat Space-Time.

S.-s. Chern

Selected Papers

1978. 2 portraits. XXI, 476 pages (34 pages in German, 36 pages in French)
Cloth DM 57.-; approx. US \$ 27.20
ISBN 3-540-90339-9

The papers in this volume comprise approximately a third of S.-s. Chern's total mathematical work to date. The selection has been made by the author himself, preference being given to his shorter and less accessible papers. In addition to the papers, the volume contains two articles by Phillip Griffiths and André Weil and a "Summary of My Scientific Life and Works" by Shiing-shen Chern himself.



Springer-Verlag Berlin Heidelberg New York

Communications in
**Mathematical
Physics**

Chief Editor A. Jaffe, Cambridge, MA

Editorial Board H. Araki, Kyoto
J. Ginibre, Orsay
J. Glimm, New York, NY
R. Haag, Hamburg
J. L. Lebowitz, New Brunswick, NJ
E. Lieb, Princeton, NJ
J. Moser, Zürich
K. Osterwalder, Zürich
D. Ruelle, Bures-sur-Yvette
B. Simon, Pasadena, CA
Ya. G. Sinai, Moscow
R. Stora, Geneva
S.-T. Yau, Princeton, NJ

Advisory Board M. F. Atiyah, Oxford
A. Connes, Bures-sur-Yvette
S. Hawking, Cambridge
G. 't Hooft, Utrecht
C. N. Yang, Stony Brook, NY

Responsible for advertisements
Springer-Verlag
Printers
Printed in Germany

L. Siegel, Kurfürstendamm 237, D-1000 Berlin 15
Telephone: (030) 882 1031, Telex 01-85411
Berlin Heidelberg New York
Brülsche Universitätsdruckerei, Giessen
© Springer-Verlag GmbH & Co KG Berlin Heidelberg 1981
Das Heft enthält eine Beilage des Springer-Verlages
Berlin Heidelberg New York